

1F 店舗 (食堂)

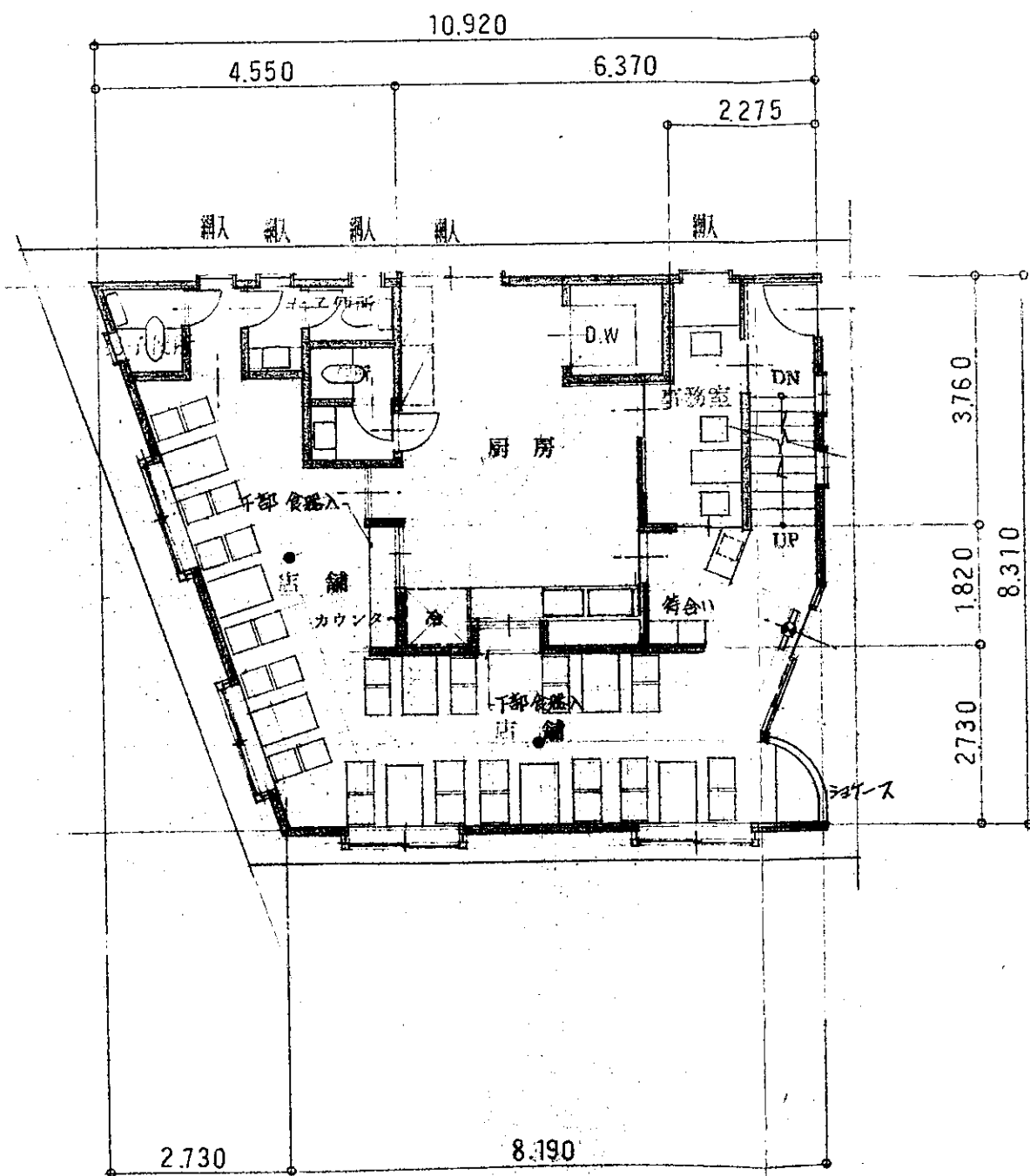
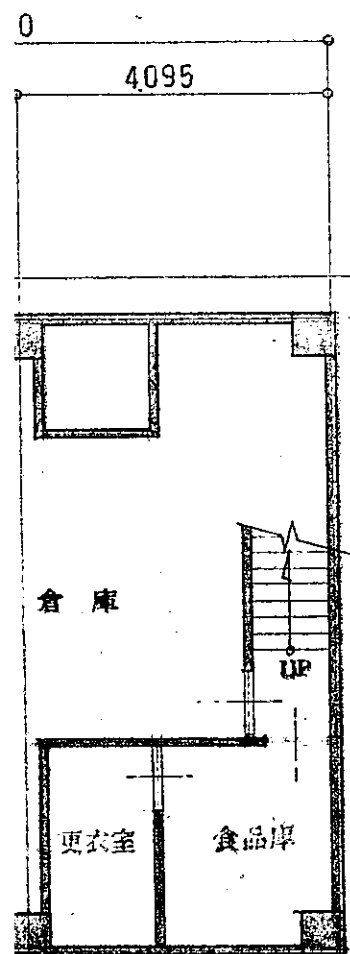
A $2.73 \times 4.55 + (6.36 + 5.46) \times 2.73 / 2 + (2.72 + 4.1) \times 4.21 / 2 = 42.91$
 $\Delta 3.0 \times 0.9 / 2 + 0.9 \times 0.45 + 1.365 \times 1.365 = 3.62$
 B $39.29 \times 1/50 = 0.79$
 C $1.72 \times 0.5 / 2 \times 4 = 1.72 > B$

事務室

A $1.6 \times 3.76 = 6.02$
 $\Delta 1.6 \times 0.45 = 0.72$
 B $5.30 \times 1/50 = 0.11$
 C $0.78 \times 0.75 \times 0.6 = 0.35 > B$

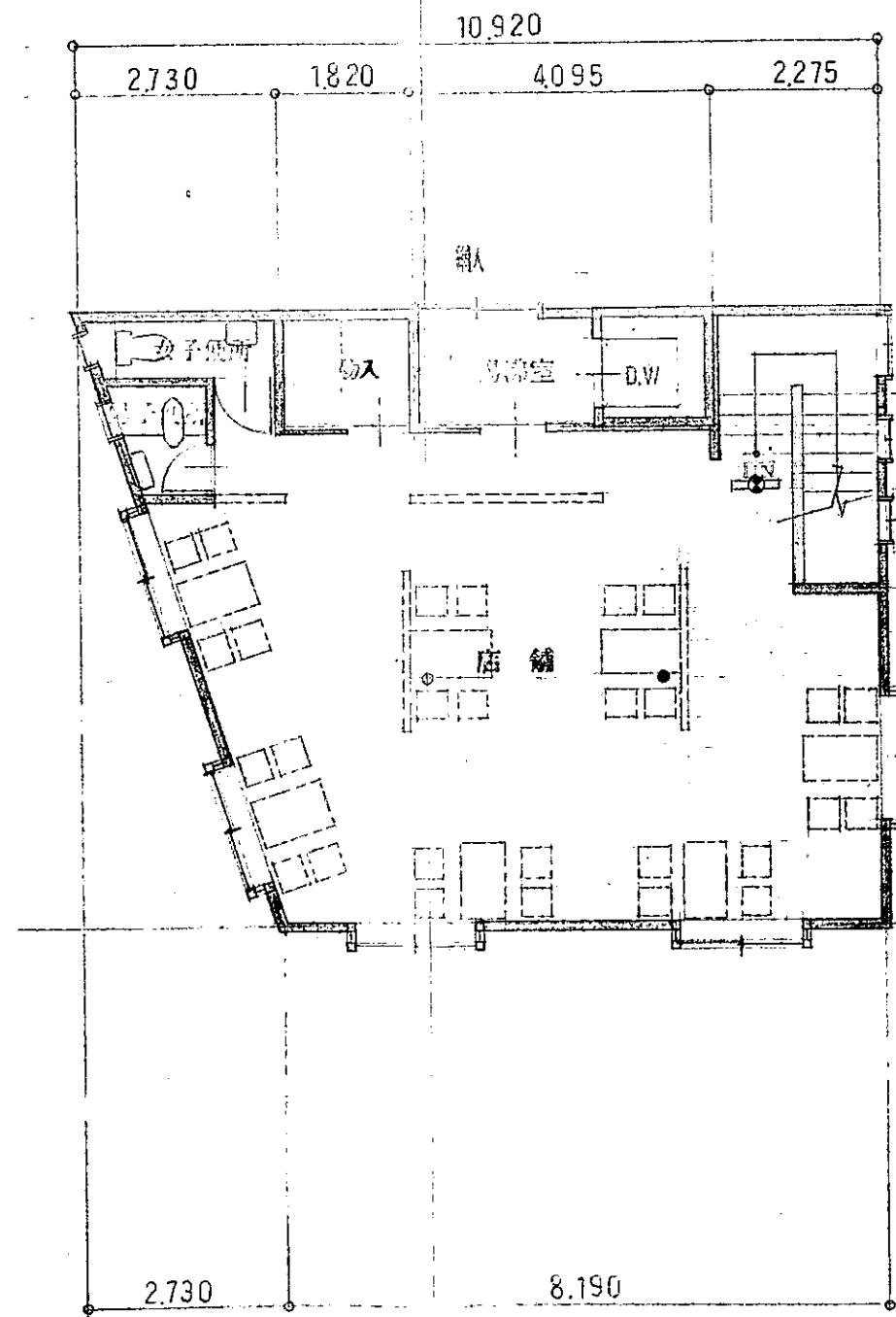
湯沸室

A $1.57 \times 2.5 = 3.93$
 B $3.93 \times 1/50 = 0.08$
 C $1.72 \times 0.6 / 2 = 0.52 > B$



1階平面図 1:100

床面積 79.40 M² (24.0 坪)



2階平面図 1:100

床面積 79.40 M² (24.0 坪)

図 1:100

床面積 68.06 M² (20.5 坪)